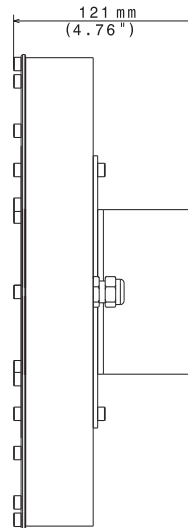
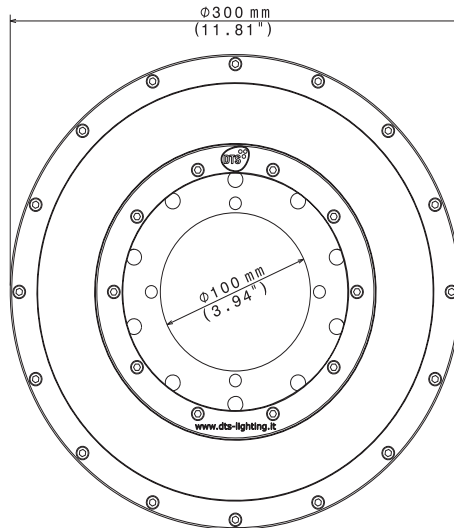
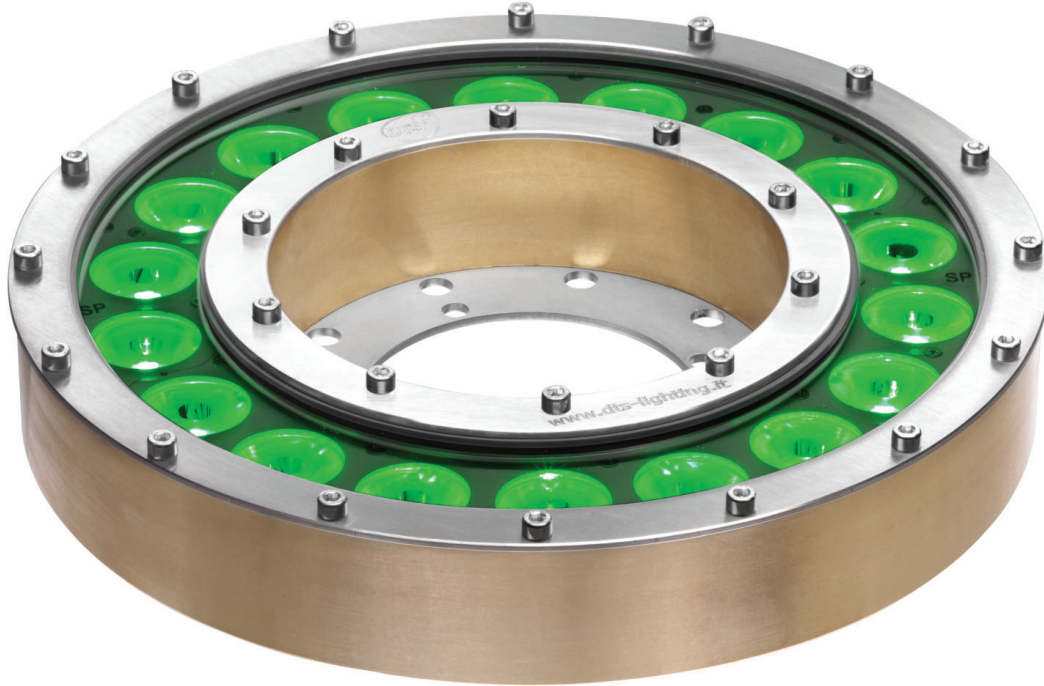




DONUT 18 FC

FULL COLOR LED PROJECTOR
FOR DANCING FOUNTAINS

DONUT is an **IP68 projector developed for fixed underwater installations**. Its particular shape allows the **fountain nozzle to pass through** the central hole of the unit, so you always get the **most suitable projection** in dancing fountain applications. DONUT is available with different optic. The unit is **powered by a DRIVENET series external PSU**. Refer to local norms in case of underwater installation.



UN LENS 8°
03.DN002.F08

SP LENS 12°
03.DN002.F10

MF LENS 27°
03.DN002.F25

WF LENS 37°
03.DN002.F40

OUTPUT

- 18 Full Color (RGBW) LEDs
- Lumens: 7,200 @ 700mA
- LED lifespan: 50,000 hours (70% lumen output)

OPTICAL GROUP

4 lenses sets available:
8° / 12° / 27° / 37°

COLOR GENERATION

- 16 million colors

- Wide palette of pure uniform whites with variable linear color temperature (2700K - 8000K)

POWER SUPPLY

- External PSU:
_ DRIVENET 28 EZ / 416 / 832 PSU (Full range 100-240 Vac 50-60 Hz)
_ DRIVENET 1664 PSU (Range 180-240 Vac 50-60Hz)

- Power consumption: 180 W max

CONNECTIONS

2 x end-stripped 8-pole cables (5 m)

OPERATING TEMPERATURE

-10° / 40° C

PHYSICAL

- IP68
- IK protection degree: IK09
- Housing: Bronze / Stainless steel
- Weight: 12.4 Kg (27.3 lbs)

SHIPPING

- Packaging: Carton box
- Box size (LxHxD): 410 x 160 x 410 mm (16.1" x 6.3" x 16.1")
- Weight: 12.8 Kg (28.2 lbs)

CONNECTIONS CHART

DRIVENET 28 EZ	DRIVENET 416	DRIVENET 832	DRIVENET 1664
Max 1 (1 item each 2 outputs)	Max 2 (1 item each 2 outputs)	Max 4 (1 item each 2 outputs)	Max 8 (1 item each 2 outputs)

ACCESSORIES INCLUDED

- 2 x Bracket for cables protection (code 00M11505)

ACCESSORIES ON REQUEST

- 8-pole underwater cable (code 0509C123)

PHOTOMETRIC DATA

LEDs current 700mA

	mt 5 ft 16.40	mt 10 ft 32.81	mt 15 ft 49.21	mt 20 ft 65.62	mt 25 ft 82.02
BEAM ANGLE 8°					
lux center (lx)	8625	2156	958	539	345
foot candles (fc)	802	200	89	50	32
diameter (cm)	70	140	210	280	350
diameter (ft)	2.29	4.59	6.88	9.18	11.47
BEAM ANGLE 12°					
lux center (lx)	3252	813	361	203	130
foot candles (fc)	302	76	34	19	12
diameter (cm)	105	210	315	420	526
diameter (ft)	3.45	6.90	10.34	13.79	17.24

	mt 5 ft 16.40	mt 10 ft 32.81	mt 15 ft 49.21	mt 20 ft 65.62	mt 25 ft 82.02
BEAM ANGLE 27°					
lux center (lx)	1066	267	118	67	43
foot candles (fc)	99	25	11	6	4
diameter (cm)	240	480	720	960	1200
diameter (ft)	7.88	15.75	23.63	31.51	39.38
BEAM ANGLE 37°					
lux center (lx)	615	154	68	38	25
foot candles (fc)	57	14	6	4	2
diameter (cm)	335	669	1004	1338	1673
diameter (ft)	10.98	21.95	32.93	43.91	54.89